



COFFEE INDUSTRY CORPORATION LTD

A quarterly publication of the PNG Coffee Industry Corporation

June 2017

ISSN: 1018-1538

CBB FIGHT PERSISTS



Also inside this issue:

- *CIC closes seven offices to address CBB**
- *CBB rehab work needs immediate assistance**
- *Cost of production to increase with CBB**
- *Four join exclusive list of international coffee graders**

MISSION STATEMENT

To increase financial returns, productivity, production and market access for female and male coffee farmers and others along the value chain, with motivated, competent and continuously learning actors.



COVER PHOTO: Service Provider Joe Kupune pruning a coffee tree in an infested garden in Jiwaka province.

INSIDE THIS ISSUE

CIC extension offices closed to address CBB.....	2
Call for funding to assist with CBB efforts.....	3
Cost of production to increase with CBB.....	4
Four join list of international coffee graders.....	5
Okapa farmers receive coffee pulpers.....	6
Fish project progressing in Barola.....	7
Pictorial.....	8-9
Coffee thrives on despite vanilla hike in ESP.....	10
Officer gain insight into WB procurement processes.....	11
Japanese visitors impressed with PNG coffee....	12
Freight program reaches more farmers.....	13

The CIC newsletter is produced by the CIC Community Information.

Acknowledge the CIC Ltd when extracting material from this newsletter.

Direction: Charles Dambui

Editor: Reuben Sengere

Layout & Design: Cora Moabi

Story contributions: Leo Wafiwa, Cora Moabi & John Supa

Email cmoabi@cic.org.pg to be added onto our newsletter mailing list.

Like us on Facebook



<https://www.facebook.com/coffeeindustrycorporation> or visit www.cic.org.pg

CIC closes 7 extension offices to address CBB

THE Coffee Industry Corporation's seven extension offices in the Highlands region have ceased recurrent programs for this year to concentrate on containing the coffee berry borer (CBB) spread.

Extension officers from Southern Highlands, Hela, Western Highlands, Jiwaka, Simbu, Enga and Eastern Highlands have closed offices since February to give concerted efforts to combat the deadly pest.

Joe Alu, a provincial extension coordinator, leading the containment team in Jiwaka, said efforts have been ongoing every week but there was more to do.

"A team of retired extension officers have been engaged and are training local men in Jiwaka to assist with pruning, burning of infested trees and spraying insecticide." He said to date, a total of 150 kilograms of infested cherries have been harvested and burnt.

CIC General Manager Mr Steven Tumae said while CIC and the National Agriculture Quarantine Inspection Authority (NAQIA) are still waiting for approved funding, the CBB pest is spreading despite the efforts by CIC using its internal funding sources to contain the spread.

Kum Michael, a farmer in Banz said after harvesting four drums (60 kilograms) of cherry coffee and having sold them to roadside buyers in Banz, she received 44 percent less income. "I did not realise my garden was already infected with CBB until told by the buyer and witnessing myself."

She said they were already seeing losses in their cherry sales and are worried they might lose everything if the pest is not contained.

Chief Executive Officer Charles Dambui said farmers in areas affected are beginning to feel the pain of losing several kilograms of their harvest and it was worrying.

CBB REHAB NEEDS IMMEDIATE ASSISTANCE TO CONTINUE

THE total land area of coffee gardens infected with Coffee Berry Borer (CBB) in Eastern Highlands province is 248.4 hectares and expected to increase once more information is made available. This was revealed in a recent report by Coffee Industry Corporation's (CIC) technical team.

CIC Chief Executive Officer Charles Dambui said a total of five teams are currently working simultaneously in all infected gardens in Asaro area with the assistance from farmers and other locals.

Around 10 percent of the infected gardens have been rehabilitated and CIC anticipates completing the next 90 percent in coming months.

He said while the spread in Jiwaka is static, there has been a gradual increase in Eastern Highlands from the initial 14 gardens to now over 70. Farmers coffee garden sizes ranges from several hundred coffee trees to just less than 5 ha."

He added that the identification of the level of infestation within infected sites in each garden had begun by the survey team with monitoring through trapping while sanitation of gardens is ongoing.

Manager Farmer Training & Extension Matei Labun explained that gardens infested with CBB are mainly smallholders (0-5 ha), with a few Block holders (6-20 ha) and plantations (20+ ha).

He said the importance of awareness and training could not be stressed enough as it will be an important aspect of efforts in educating rural farmers. "Farmer education with the use of visual aids has raised the level of awareness triggering concern by farmers and others who attended the awareness meetings carried out by the technical team in the last couple of months."

Mr Labun said new infected gardens are currently being reported by farmers, making it easy for the monitoring and containment team to immediately attend to the sites and confirm CBB presence.

He said after more surveys were done in Eastern Highlands, a total of three plantations indicated presence of the pest; Roka and Wantrifu in Asaro and Arikayufa in the Unggai-Bena district.

Block holders include Gire Gire, Paul Asaro, and David Mehuwo, all from Asaro Valley.

CIC General Manager for Research & Extension Services Division Dr Mark Kenny said a total of 45, 589 trees have been pruned in highly infested sites to destroy all remaining CBB food source. He said there have been substantial crop losses from those trees pruned.

"To date farmers with CBB presence in their gardens have been very helpful and co-operative by volutarily allowing the containment team to move in swiftly to work in the infected gardens."

He said rehabilitation work in terms of sanitation, pruning, cherry stripping, spraying of insecticide and herbicide will continue in the remaining months of 2017.

There is still a lot more work to be done by our field team as we have 222.2 hectares of infected gardens yet to be rehabilitated in Eastern Highlands while we wait for results for Jiwaka as work progresses.



Women farmers in Asaro, who are part of the CBB rehabilitation team currently working in the area.

Production costs to increase with CBB

It will cost an estimated US\$199 per hectare (K663) to control the coffee berry borer (CBB) to manageable levels.

Coffee Industry Corporation (CIC) principal entomologist Dr Nelson Simbiken said the immediate cost of production and processing coffee will increase by 40 percent given the additional task required to control CBB, and to produce quality coffee.

“Eradication and management of 100 percent infestation of coffee gardens would cost more than K600 per hectare, 50 percent infestation to cost K450 per hectare and less than 3 percent infestation to cost K350 per hectare.”

He said costs include field sanitation, trapping, surveillance, harvesting, gleaning (stripping) of fallen berries, weed control, insecticide and biological control. He was commenting on findings revealed by CIC chief executive officer Charles Dambui on the extent of the spread of the pest in Asaro in Eastern Highlands province.

Mr Dambui had visited the area to see firsthand the work being undertaken by CIC extension officers.

He said the number of gardens affected by the Coffee Berry Borer (CBB) had risen from 67-71, sparking concerns among farmers.

The CEO said he is equally concerned on the impact on farmers.

He said five plantations indicated presence of the pest, four of them in Asaro and one in Masumave in the Unggai –Bena district.

A farmer, Inna Mehuwo, had commended the CIC’s extension team, however, she called on district leaders to join in the fight against CBB.

“When I heard about CBB, I was troubled because coffee supports my family. Although, it hurts me to see the officers do cherry stripping on my coffee trees, I know that this will save my other uninfected coffee blocks and the industry in the long run,” she said.



Inna Mehuwo (centre) with other women from the Asaro Valley showing infested cherries that were harvested from her coffee gardens.

Inna and husband David Mehuwo have been cultivating coffee since the 1980s and own more than 20 hectares of coffee blocks near Asaro station.

Since March, ten casual workers have been engaged on fortnightly basis in each site to do cherry stripping and clear weeds after chemical spraying on the grass.

Rehabilitation work has been completed in one garden in Jiwaka with 13 needing immediate attention.

In Asaro, four gardens have been rehabilitated with 67 more to go.

Four join exclusive list of internationally recognized coffee graders

FOUR coffee industry officers have successfully passed an arduous and stringent international cupping examination process to become certified Arabica coffee graders (Q graders) for Papua New Guinea.

They were part of a class of 12 who sat through a week-long training and examination organized by Coffee Industry Corporation (CIC) at its Research & Growers Service Division at Aiyura Valley on 22-27 May, 2017.

The certified graders of the first-ever in country Q grader training were Marty- Linda Hasu, Stilla Frisu and Enos Dum of CIC and Mark Munnul of Kosem Coffee Ltd in Jiwaka province. They now join the exclusive list of five Q graders in the country to assess the quality of coffee in cup and grade.

Ms Lovelynn Pewi Kunoko of Niugini Coffee/NGIP Ag-mark was the first to be certified in a four-day training in the Philippines in 2016.

PNG now has five certified Q graders.

Q grader is a term associated with speciality coffee industry. They objectively examine coffees and score them based on their many attributes and overall quality. It is the only certification in the industry that is based on quality. The system quantifies taste attributes in a coffee cup such as acidity, body, flavour, aftertaste, uniformity, balance, sweetness etc. to ensure all participants are identifying flavour characteristics in the same way.

It was a hectic six-day for the class of 12 covering general knowledge, sensory skills, green grading, roast identification, olfactory matching and blind testing, cupping skills and triangulation.

"It was tough and mind-boggling to remain calm and trust our instinct to identify various taste attributes or flavour in the different coffee origins," says Mr Munnul

of Kosem Coffee. His processing and exporting firm is partnering CIC's Productive Partnerships in Agriculture Project to rehabilitate coffee gardens in Jiwaka.

The training was important for the industry to up skill coffee cuppers to be on par with international standards in terms of grading specialty coffees.

"The training will help participants to confidently identify specialty coffees so better prices could be negotiated for farmers and for the coffee organisations," says Rose Romalus, CIC acting manager for Industry, Regulations & Compliance.

The Q graders training also compliments CIC's rehabilitation effort under PPAP to beef up cupping services for growers in coffee growing areas. This will give effect to the proposed grading system awaiting gazettal, for green bean coffee based on cupping quality.

"At present processors and exporters buy parchment mainly at Y grade price. Availability of certified Q graders and facilities will help growers get independent quality assessment, hence a fair price for their coffee based on cup quality," says Potaisa Hombunaka, Project Manager for CIC-PPAP.

CIC General Manager for Industry Operations Division Steven Tuma said the training is the only internationally recognised certificate system for Arabica cuppers for specialty coffee by the Coffee Quality Institute (CQI) in the United States.

"Hence the course was sanctioned by CQI following an application by CIC and conducted by a certified instructor from Indonesia Mr Adi Taroepatjeka who is Q (Arabica) and R (Robusta coffee) grader, and Q instructor," says Mr Tuma.

Chief Executive Officer for CIC Charles Dambui acknowledged the support of World Bank and IFAD (International Fund for Agricultural Development) through PPAP to fund the preparatory training in Goroka and PHAMA (Pacific Horticultural and Agricultural Market Access) program to fund the actual training and examination at Aiyura Valley.



Mark Munnul
Export Manager- Kosem Ltd



Marty-Linda Hasu
Post-Harvest Research Officer- CIC



Enos Dum
Food Technologist- CIC



Stilla Frisu
Coffee Inspector-CIC

Okapa farmers receive coffee pulpers

A hand coffee pulper sells for between K400 and K500 but farmers at Okapa, Eastern Highlands province got one each for K40 only, thanks to Coffee Industry Corporation's Productive Partnerships in Agriculture Project (CIC-PPAP).

The pulpers were given to 800 growers at Keafu Village by Highlands Organic Agriculture Cooperative (HOAC) on Thursday 4th May, 2017. The farmer group is a co-partner of Coffee Connections, a lead partner of CIC-PPAP implementing coffee rehabilitation activities in the district with 3900 growers since 2009.

It was the first for these smallholder growers in a remote district to receive such support.

"Em fes taim mi lukim kain helpim na mi amamas. Papa na mama save rolim kofi seri long ston. Tupela no kisim kain helpim long 30 yia kam inap tude" Tenkyu tru" (My first time to see such benefit and I'm happy. My parents pulp coffee cherry using stones. They didn't get such help for 30 years until today. Thank you), says Napo Serego, 30, who is married with three children and has three coffee gardens.

"We want farmers to pay only 10 percent of the cost to take ownership of the tools," says project manager Potaisa Hombunaka.

The effort has put smiles on the face of thousands of rural growers taking part in coffee rehabilitation activities in 10 coffee growing provinces.

"The reality is many of these growers are in the bush. They can't afford these tools so it doesn't make sense to tell them to produce more quality coffee without providing the necessary tools", says Mr Hombunaka.

Tools and materials distribution are interventions aimed at raising production and quality following a plunge in both due to volatile world market price in recent years.

While the 2017 election fever has also hit the Okapa District, that didn't distract close to 200 growers and their families who gathered at Keafu road junction as early as 10am to witness this milestone occasion.

Ricky Eno of HOAC acknowledges the growers' attendance and reminded all to focus on coffee development activities which he says is vital for their wellbeing.

"The election is a like a flower blooming every five years for a short time only. The flower will fade and fall. A coffee tree is here to stay. It blooms all-year-round and is our pay master. I appreciate your right thinking for waiting here today."

Field technical consultant Ms Maureen Kahento explained to the growers the CIC-PPAP model that is improving existing coffee gardens in partnership with coffee processing and exporting firms, non-governmental groups, community and faith-based organizations.

Following the official presentation field officers working for HOAC called out the names and growers walked up with excitement to receive their coffee pulpers.

The PPAP is a CIC project through the Department of Agriculture & Livestock financed by a loan facility from World Bank (IDA) and IFAD (International Fund for Agricultural Development) with counter-funding from PNG Government.



An old woman and her family at Okapa District of Eastern Highlands Province were happy to receive their hand coffee pulper- thanks to PPAP coffee.

Fish project progressing in Barola

BAROLA village in the Kamano 1 area of Eastern Highlands province is not backing down in making more changes in the community after launching its first 20,000 capacity coffee nursery late last year.

Infamous for notorious activities in the past years, the community is slowly rebuilding public confidence and that has not stopped them to venture into other community development projects.

On Thursday 20th April, 2017, a team of officials from the Coffee Industry Corporation and the Office of Coastal Fisheries Development Agency visited the village to see the progress of coffee development and a fish project initiated early this year.

In the first quarter of 2017, the community received training by an officer from the Fisheries office in Aiyura on how to dig fish ponds and piping of inlet water and outlet of excessive water. Training on inland fish farming management techniques, producing fish meals and using local food is being planned for phase two of the project next month.

Barola coffee cooperative leader Nime Miefia said so far 22 fish ponds have been completed with each pond project contracted to families and youth in the community.

"I am grateful that with coffee being the fundamental point of change in this community, we are seeing other positive projects coming in to encourage us to continue on from where we started."

Nime thanked Office of Coastal fisheries Development Agency for providing financial assistance through CIC that has kick started the fish pond project to support its income generating activities.

The community has also constructed a water supply system approximately 3 kilometres from the Barola mountain to the village that will in turn supply continuous water to all the 22 fish ponds. The construction is expected to be completed before the end of April. This will see 20 water taps installed in the vicinity of the village for people to access clean water at their doorsteps.

Executive Director of Coastal Fisheries Development Agency Joshua Ryan expressed satisfaction with the level of community effort in the fish project in Barola. "You are the first community in Eastern Highlands to receive assistance towards such projects and I can already see community oneness in the way you are working."

CIC General Manager for industry operations Steven Tumae thanked Coastal Fisheries Development Agency for partnering with CIC to deliver this livelihood project to the Barola community.

He said farmers in Barola have shown great enthusiasm and this was demonstrated in the changes seen in the community.



From Left: CIC certification officer Joseph Binabe, Executive Manager for Coastal Fisheries Development Agency Joshua Ryan, Barola coffee cooperative chairman Nime Miefia and CIC project officer John Taunu showing the water pipe that will be constructed to bring water to the 22 fish ponds.



Women in Asaro Valley burning CBB-infested cherries.



General Manager Industry Operations Steven Tumae speaking to a community during a CBB awareness in Watabung.



Police personnel with CIC staff at the CBB roadblock at Ganige.



Service provider Casper Sual pruning coffee trees in Jiwaka province.



PPAP project coordinators who attended a weeklong training in Aiyura, CIC office, in May this year.



Jiwaka Provincial Farmer Training and Extension Coordinator Joseph Mek assisting a service provider with a mist blower for CBB.



CBB stakeholder consultation meeting in Lae, Morobe province.



Japanese tourists having a chat with coffee farmers in Sakanuga village in Eastern Highlands province.



Enos Dum, Bernard Tabuli and Jennifer Karol at the Q-graders preparatory training in Goroka.



Service providers working in a CBB-infected garden at the Catholic Mission in Banz, Jiwaka province.

Coffee thrives on despite vanilla hike in ESP

Many coffee farmers in the lowlands of Papua New Guinea do not get as much attention as their Arabica-coffee-farming brothers and sisters in the highlands and the hinterlands of some coastal areas. It's time for that change, and this story will give you a different perspective of coffee farming in the lowlands.

It is Tuesday 23rd May and we start our journey just after mid-day to Division Two in the Angoram district. The bad condition of the road makes the trip difficult, but we get there – four hours later. While many people in East Sepik would rather plant vanilla than cocoa, longtime didiman Thomas Ainero is confident that our rough trip will be worth the trouble if we can encourage coffee farmers to stay the course and not switch to cocoa or vanilla – or even oil palm.

We are accompanied by the Momase chairman for smallholder's coffee growers' association, Jerry Anisi, another coffee ambassador for Maprik. Angoram district is a sleeping giant in terms of cash crop development because of its large population and abundance of land.

Thomas tells us that the low price of Robusta coffee is discouraging farmers. "The current factory door price per kilogram in Wewak is K1.20 for parchment coffee and the lowest it could go is 80 toea.

What is currently getting farmers on their feet is the current vanilla price, which is going for K700- K800 per kilogram in Maprik and Wewak.

The Coffee breeding programme on Omuru 1 carried out by CIC's research division began in 1994 and concluded in 2000 at the Omuru substation near Madang town. Nine lines of Robusta clones were trialed and CIC recommended Omuru 1, with PN91, PN94 and PN96 varieties attaining the best yield and quality. Thomas owns a hectare of Omuru 1 Robusta coffee seed garden and sources cuttings from his central pit nursery.

The central pit nursery was established in 2010, and he has been able to distribute more than 20,000 cuttings to farmers in Angoram, 12,000 cuttings to farmers in Maprik, 6000 cuttings to Dreikikier and 1500 to Wosera/Gawi. The income helps pay church groups to maintain the nursery. He said his desire has been to keep coffee production going in the Angoram district. The Robusta cuttings are being sold to farmers for only K1 each. "I am always doing awareness and encouraging them to see me to collect cuttings to plant."

Three nurseries – one each at Angoram, Dreikikier and Maprik – were set up in 2008. However, because of funding and logistical issues, the Angoram nursery is the only one that has survived.

Before the vanilla boom in 2006, there was no coffee coming out of East Sepik. When the vanilla prices made a downturn, the CIC introduced coffee cultivation and group marketing into areas in Angoram, Dreikikir, Wosera/Gawi, Yangoru and Maprik.

Beginning with only four cooperative groups in 2006, a total of 19 tonnes of green beans were sold. By 2008, that had increased to 26 cooperatives and 124 tonnes of coffee. Today, there are 55 groups and they have made East Sepik the leading Robusta producer in the country. For farmers like Thomas, the challenges are undeniable. From low factory door prices to transportation costs, farmers struggle on, even when the province is experiencing a hike in vanilla prices.

Jerry Anisi, the chairman of the smallholder coffee growers' association for the Momase region, said that last month he saw vanilla being bought in Dreikikiera for K1000 per kilo – a slap in the face for coffee growers.

Robusta farmers make up five percent of the total coffee production in PNG, with the top producers coming from Ambunti/Dreikikier, Maprik and Wosera/Gawi. East Sepik's annual production for the past 10 years has averaged 1,459 bags of green beans from more than 800 farmers.

At a meeting of coffee farmers in Maprik on Thursday 25th May, the majority called for the establishment of a central dry mill in Maprik. They said this would ease the problem faced with transportation into Wewak. Currently, farmers wait between four and six months to get paid for their green bean coffee.

Patrick Biahicga, a farmer from Maprik, said taking his coffee from Wamsok to Saunes is a trip of between four and six hours, and further on to Wewak costs around K15 per bag. "We desperately need good roads and bridges to make things easier for us."

.....*More on page 14*.....

Officers gain insight into World Bank procurement process

PARTNERSHIPS supporting Productive Partnerships in Agriculture Project (coffee component) must comply with World Bank procurement process and guidelines to serve better the farmers.

This was the message given to 18 officers working as project coordinators, extension officers and data entry clerks by PPAP manager Potaisa Hombunaka. The officers attended attending a one-day training in Goroka on Thursday 11 March, 2017.

"There is no short cut in the PPAP modality. We have to comply with the rules of engagement when it comes to procuring goods and services.

"Only then we can do it better to improve the livelihood of our farmers which is the end game."

The participants work for partnerships who are implementing coffee rehabilitation work in Eastern Highlands Province. The activities include improving the farmers' rundown coffee gardens, setting up nurseries to raise coffee seedlings and carrying out improved post-harvest practices in cluster groups.

The training was conducted by Senior Procurement Consultant Ms Theresa Witi at the Bird of Paradise Hotel. It was the first time for these officers in Eastern Highlands to gain an insight into World Bank's procurement and tender process conducted by CIC through its coffee component of PPAP.

The training focuses on how lead and co-partnerships can sought reliable dealers to provide goods and services to carry out their coffee rehabilitation activities with farmers. Some tools and materials procured by lead partners are hand coffee pulpers, bush knives, files, spades, secateurs or scissors, bowsaws, knapsack sprayer, weedicides, canvas, coffee films wires for pig fencing.

These tools and materials are given to farmers at a subsidized cost to help with clearing and pruning of gardens, control weed, dry coffee and control quality in a bid to boost production and quality at the growers' level.

The effort has put smiles on the face of growers in 10 coffee growing provinces taking part in rehabilitating their gardens and trees.

Participants at the training were project coordinators, data entry clerks and extension officers working for PNG Coffee Exports/AAK and Angra Coffee Cooperative, Obura-Wonenara Coffee Cooperative Society, CDA Goroka, Wantrifu Coffee, Research & Conservation Foundation (Crater Mountain farmers) and Coffee Connections.

The officers were also taken through how to procure consultancy services from reliable or certified expertise to facilitate farmer training in selected topics like in business management skills, conduct farm book/record keeping, and carry out HIVAIDS and gender equality training with farmers and their families.

Mr Hombunaka emphasized that it is important for all partnerships to understand and comply with procurement guidelines to make easy quarterly reporting and on-going verification by CIC-PPAP consultants.

The PPAP is a CIC project through the Department of Agriculture & Livestock financed by a loan facility from World Bank (IDA) and IFAD (International Fund for Agricultural Development) with counter-funding from PNG Government.



Officers working for CIC-PPAP Lead Partners in Eastern Highlands province attending the procurement training at the Bird of Paradise Hotel in Goroka.

Japanese delegation impressed with PNG coffee

A week-long fact finding tour of PNG's coffee origin by a Japanese delegation comprising of specialist Coffee Connoisseurs, representing some leading coffee roasting, brewing and cafeteria chains in major metropolises in Japan, left PNG over the week-end highly satisfied with the quality of PNG coffee.

The 11-member team comprising of nine males and two females was made possible, courtesy of MG Corporation (MGC) of Japan, a major partner of the Coffee Industry Corporation (CIC) and one of PNG's specialty coffee importers. CIC in recent times reciprocates by purchasing solar coffee pulpers and fertilisers from MGC for the development of coffee.

The 11 Japanese coffee connoisseurs may have come here to sample and authenticate PNG's coffee quality from respective coffee origins, which MGC normally imports and distributes to its clients back in Japan. However, so fascinatingly is the fact that some of the Japanese are coffee entrepreneurs themselves, while others are professional coffee connoisseurs or tasters. Therefore, sampling and grading of PNG's origin coffee by the 11 experts, opens opportunities to pave way for the establishment of new and direct market accessibilities for PNG's coffee growing/producing communities to export their organic coffees direct to Japan and fetching premium prices unlike the current conventional marketing trends.

According to the Japanese Team Leader and MGC's

Tokyo-based, Nobuo Matsuki, members of the delegation were impressed with the quality of origin coffees that they sampled and tasted during the tour. MGC was also represented by Seijiro Umemoto and Yukari Sakai (both also Tokyo based), and Makiko Ito from Sendai city.

The other members of the delegation include; Masanori Nakamura of Nakamura Coffee in Ise in Mie Prefecture, Yuki Kayama of Cerrad Coffee in Tokyo, Hiroyuki Kimura of Bees Coffee (Tokyo), Hisao Hori of More Coffee in Ehime, Yoshiya Tsuzuki of Coffee Verdi in the city of Kyoto, Hiroshige Murakami of Murakami Coffee in Saitama and Isao Kaga of Kaga Coffee Factory in Odate – Akita.

During the tour, the delegation sampled coffees from Milne Bay, Morobe and Eastern Highlands and Jiwaka provinces. Apart from only one coffee sample that had below required standard due to storage and delayed transportation into CIC's Coffee Research & Extension HQ at Aiyura outside Kainantu, the delegation expressed huge satisfaction on other coffee samples that were liquored in Lae, Aiyura and Goroka.

The delegation commenced their tour in Lae, visiting CIC's Lae facilities where all coffees destined for exports are stringently analysed to determine quality and grading. They later visited the Freight Management Service warehouse, where the visitors were told of how PNG's export bound coffees were carefully shipped under strict quarantine practices.

The Japanese delegation which was spearheaded by Dr Mark Kenny, CIC's General Manager (Research & Growers Services Division), and his deputy, Mr Matei Labun, then travelled to Aiyura, CIC HQ in Goroka. In Bena outside Goroka, the delegation was given a rousing welcome by villagers of Sakanuga. Further to Jiwaka Province where MGC imports most of its coffee through the father and son team of John and Mark Munnul entrepreneurship known as Kosem Coffee, the Japanese were given a guided tour of the Kosem coffee factory, including specially graded coffee packed and ready for shipment to Japan.

According to Dr Kenny, the tour of PNG by the 11 Japanese coffee entrepreneurs and specialists was a viable opportunity, which PNG coffee growers through CIC intend to showcase their capabilities by producing and exporting specialty coffee to such niche markets in Japan and fetching premium prices for their coffees.



Japaneses coffee connoisseurs at the CIC headquarters in Goroka.

Coffee freight program reaching out to more rural areas

COFFEE freighting from various remote location only accessible by air using light aircrafts continues to be a challenge for many rural farmers due to high freight costs.

With these challenges, the Coffee Industry Corporation (CIC) continues to implement its Freight Subsidy program as an incentive scheme and tries to look at other options to save costs and in return increase farmers' income.

In March this year, an arrangement was made with Adventist Aviation Services based in Goroka with the CIC to position their aircraft at Gusap Airstrip in Ramu Valley to uplift coffees from airstrips in Rai Coast District, Madang and Kabwum District in Morobe.

Coffee freight officer Ben Lohe said Gusap Airstrip was identified an ideal location to position planes there to freight coffees in from Kabwum, Rai Coast, Usino-Bundi and lower Middle Ramu districts. He said the aim of repositioning the aircraft there was to save costs and increase the number of trips to lift out more coffee bags.

With this new arrangement, the coffee freight program was able to airfreight 20,753 kgs (20.7tonnes) of coffee parchment from Teptep (1,071 kgs), Gogiok (6,218 kgs), Sapmanga (3,150 kgs), Yawan (7,284 kgs), and Bungawat with 3,030 kilograms.

The program was able to cut back 11 per cent on total costs with the positioning at Gusap, with twenty one trips at a cost of K98,000.00.

An average charter from Dinangat in Kabwum district to Nadzab costs K5,000.00, however, to Gusap is at K4,600.00.

The coffees belonged to farmers groups under the Tree Kangaroo Conservation Program in the Yus LLG, Kabwum district. The coffees were processed and sold overseas.

CIC chief executive officer Charles Dambui said that more coffee from the rural areas could not be sent into the trading depots, due to poor upkeep of jetties and airstrips and high transportation costs.

"Coffee Freight program is an initiative of CIC supported by the National Government through the Public Investment Program that aims to facilitate market access for coffee growers from the remote areas by assisting in transporting coffee to the nearest marketing depots, facilitating processing and marketing."



CIC officers offloading coffee bags from an Adventist Aviation aircraft in Ramu.

continued from page 10.....

Pacific Agro Limited is the only company that processes coffee from smallholders in East Sepik, and farmers have been using their services for the past 12 years.

Dr Nelson Simbiken, the CIC principal entomologist and team leader for Integrated Farming Research Systems, was in the province in May with Omuru substation manager Philip Puke to visit nursery pit gardens in Angoram and Maprik and meet farmers.

Simbiken praised the efforts of the East Sepik farmers, saying that their interest and perseverance are a message of hope for the industry. CIC, he said, will be supporting them with incentives to boost what they have started in the form of integrating complementary projects such as honeybee farming, galip nut trees and central coffee nurseries. The first shipment for 600 galip seedlings is expected to reach East Sepik in the third quarter of 2017.



Thomas Ainero checking his Omuru 1 nursery in Division two, Angoram District.

Galip nut will be integrated with Robusta coffee as a shade tree and in return farmers could compliment their coffee earning with the nut which can fetch between K20-K30 per kilogram. In addition to that, CIC's freight programme assisted in the purchase of a Toyota dyna truck in 2015 to help farmers take their produce to Wewak. The programme is also paying upfront fees to Sepik Coastal Shipping Agency to take their coffee to Lae.

The programme will continue as an incentive for farmers.

Elders in Wawat in the Angoram district have surrendered 64 hectares of their land for nursery development. CIC Chief Executive Officer Charles Dambui expressed his gratitude to farmers in East Sepik for continuing to believe in coffee when times are hard. "These are the coffee champions in East Sepik and West Sepik provinces."

He said the farmers' concerns have been noted and plans are underway to make things better. He has also asked provincial and district administrators in the province to help.

Key Areas for CBB funding identified

THE state agencies tasked in combating the coffee berry borer (CBB) say the K20 million yet to be released by Finance and Treasury will go towards funding nine key areas. The funds were approved by the National Executive Council (NEC) in April, but the Coffee Industry Corporation (CIC) and the National Agriculture Quarantine Inspection Authority (NAQIA) are still waiting.

CIC principal entomologist, Dr Nelson Simbiken, told Post-Courier top priority of the nine key areas identified include an eradication and containment exercise of which, the agencies anticipate 22 percent of the total funds.

Dr Simbiken said this includes rehabilitation of infected smallholder gardens.

Next on the list, in terms of funding, is the monitoring and surveillance of coffee growing rural communities, which will take up 20 percent of the budget, with planned exercises including farmer training on identification of CBB.

Other areas include research capacity of CBB, which 16 percent, establish model smallholder and plantation for strategic management of CBB, and improved coffee production and quality-12 percent, awareness of CBB- 11 percent, restriction, regulation on movement of unprocessed coffee- 10 percent-the intent being to minimise the spread of the pest to new areas through the movement of coffee, mobilise grower groups for CBB management and quality improvement- three percent, training on groups on coffee quality improvement-three percent and CBB strategic management – three percent.

Dr Simbiken said of the total funds the state agencies expect that coffee growers would benefit from 90 percent of the funds expended on CBB. He said implementation for the remaining seven months for 2017 would cost K7.2m, while over the next three years at least K80m.

Officer urged to put farmers first

THE Productive Partnerships in Agriculture Project (coffee component) continues to encourage all officers employed under the industry rehabilitation partnerships to put farmers first in their duties.

"If you focus on the pay you will lose focus on the job. You're here to serve the farmers," says Project Manager Potaisa Hombunaka to 42 officers currently attending a training at SIL Ukarumpa in the Aiyura Valley, Eastern Highlands Province.

The training was held on Monday 5th May was attended by project coordinators, data entry clerks, extension officers and field assistants employed with four partnerships under call 3 and 4. The partnerships are CDA Goroka, Hatavile Coffee Ltd, Research & Conservation Foundation (Crater mountain farmers) and Obura-Wonenara Coffee Cooperative Society.

The objective here is to ensure all project coordinators, extension officers, data entry clerks and field assistants understand what is required of them and to operate as a team to successfully deliver the agreed coffee rehabilitation activities which includes reviving existing gardens.

The officers are also expected to report accurately input activities like distribution of tools and nursery seedlings and monitor outputs in terms of production and quality and others associated with improving farmers' livelihood.



Extension officers group at the Aiyura training centre.

"This training is meant for field assistants helping extension officers.

But team building is a constant process. Even with talented players, a team doesn't start great. "This is why we bringing everyone to make sure they understood their responsibilities and where field officers comes in to support the whole operation process," says Bill Humphrey, Component 2 Coordinator for Eastern Zone. The Coffee Industry Corporation currently has two officers in each coffee growing officers. The project is extending the reach with more extension and field officers from the respective local areas of operation. "The extension knowledge and experience that is gained must remain in the area after the life of this project; there is no need to recruit from outside the project area. This is how CIC-PPAP is approaching all trainings with 26 partnerships under call 3 and 4 in 10 coffee growing provinces," says Mr Hombunaka.

A similar training had already been provided to 11 officers in East New Britain and 28 in Morobe provinces. This training will continue to cover projects in Simbu, Jiwaka, Western Highlands, Southern Highlands, Enga, Madang and East Sepik provinces.

CURTIN CHANCELLOR'S COMMENDATION LETTER FOR CIC OFFICER



Reuben Sengere will graduate with a Doctor of Philosophy in September at the graduation ceremony at Curtin University in Australia. What is more pleasing for the organisation is that he will also be receiving a Chancellor's Commendation Letter at this year's graduation. Reuben, who is based at the Coffee Industry Corporation's (CIC) research and development division in Aiyura, EHP wrote a thesis titled, "The rise, fall and revival of the Papua New Guinea coffee industry". Supervised by Professor George Curry and Dr Gina Koczberski, Reuben's thesis traced the development of the PNG coffee industry from its early beginnings in the 1950s through its heyday in the 1970s and early 1980s and its long, slow decline to the present.

According to Professor Curry, "a major strength of his research was the contextualisation of his findings in the situation of a rapidly changing society moving from a largely subsistence-based economy with a weakly developed market economy where traditional social and economic values shaped farmers' engagement with the market. His findings help explain the factors contributing to the decline of the coffee industry and identify potential strategies to reverse this decline".

Reuben has returned to his job with the Coffee Industry Corporation (CIC) of PNG after three and half years of study in Perth. His thesis recommendations are now informing CIC policies and strategies for smallholder farmers.

The findings have highlighted the need to accommodate socio-cultural and indigenous leadership factors when devising industry policies for smallholders. His work has led to a greater appreciation amongst industry stakeholders of the enduring role of traditional socio-economic factors in smallholder coffee production.

CIC has recognised the value of this research by establishing a socio-economic research section.

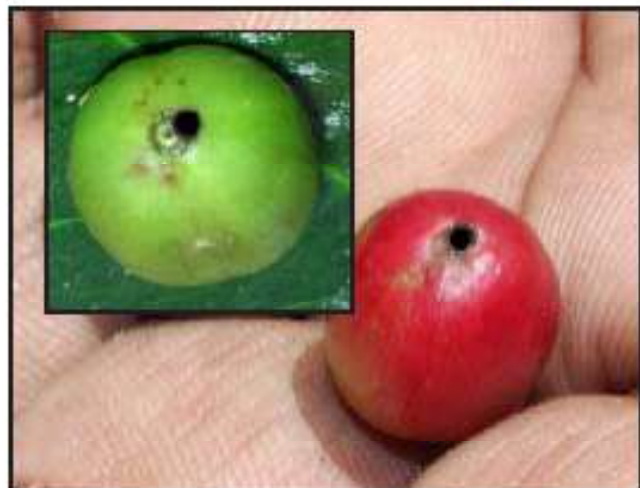
TOKSAVE

KOPI BERI BORA IN STAP PINIS LONG PNG

**KOPI BERI BORA EM
WANPELA BINATANG
WE ISAVE MEKIM HUL
GO INSAIT LONG SERI
KOPI LONG PUTIM
KIAU BLONG EM.**



**SAPOS YU LUKIM HUL
LONG HET BILONG
GRIN O MAU SERI KOPI
KATIM GO HAP.**



**SAPOS YU LUKIM OL
DISPELA BAGARAP
INSAIT LONG BIN.**



**TOKSAVE HARIAP LONG CIC OPIS
KLOSTU LONG YU**